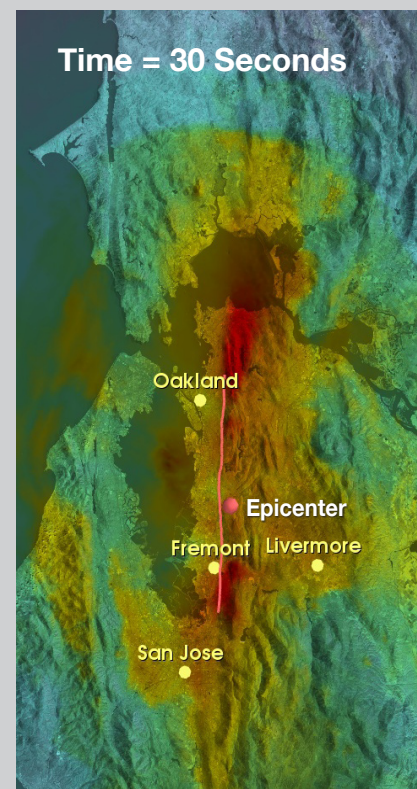
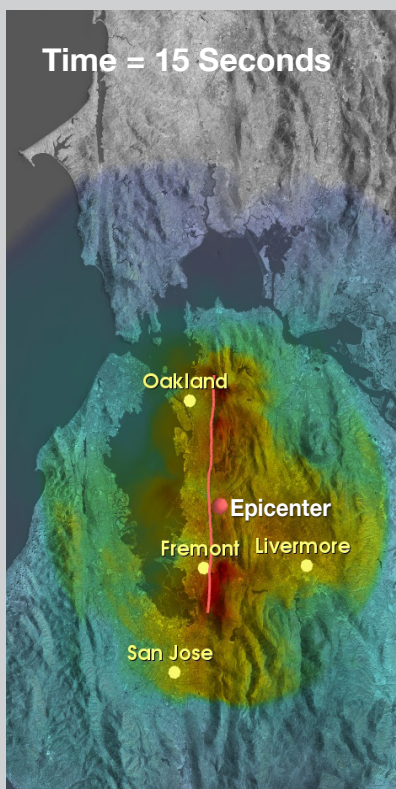
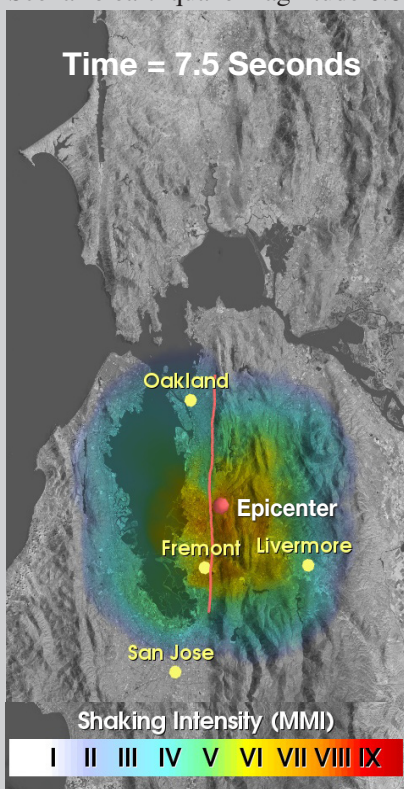


# Ready for the Next Big Bay Area Earthquake?

*The 1989 Loma Prieta Earthquake was not the Bay Area's "Big One" but a repeat of the destructive 1868 Hayward earthquake may qualify!*

**by Tom Brocher, USGS Seismologist**

Scenario earthquake magnitude 6.8



- The next large Hayward Fault earthquake will affect the entire San Francisco Bay Area – *Are You Prepared?*
- The Hayward Fault is the most urbanized active fault in the Bay Area. The fault crosses multiple freeways, major water pipelines, and BART runs parallel to and crosses the fault.

- A large earthquake on the Hayward Fault could impact more than 5 million people with \$1.5 trillion in property damage.
- October 21st marks the 140th anniversary of the last large earthquake on the Hayward Fault. Are we due for a repeat?

